



# PARTS CATALOGUE

**EF3000iSE** ( 7CHN ) AFR,CHN,SEA

**EF3000iSE** ( 7CHN ) AUS

**EF3000iSE** ( 7CHN ) KOR,PER,PHL,SAU

EF3000iSE  
PARTS CATALOGUE  
©2023 by Yamaha Motor Co., Ltd.  
1st edition, April 2023  
All rights reserved.  
Any reprinting or unauthorized use  
without the written permission of  
Yamaha Motor Co., Ltd.  
is expressly prohibited.  
Printed in Japan.

# FOREWORD

This Parts Catalogue is related to the parts for the model(s) on the cover page. When you are ordering replacement parts, please refer to this Parts Catalogue and quote both part numbers and part names correctly.

1. Modifications or additions which have been made after the issue of the Parts Catalogue will be announced in the Parts News.  
It is advisable that you make the necessary corrections to the Parts Catalogue according to the Parts News.

2. Abbreviations

The following abbreviations are used in this Parts Catalogue.

“UR” Use specified parts number.

“UN” Use as many as needed.

“AP” Alternate Parts

“LM” Locally Made (Parts need to be ordered locally)

“F#” Frame No. (Applicable machine No.)

“O/S” Over Size

3. The number of components for assembly

- Parts, which are to be supplied in an assembly, are listed with a dot (.) in front of the part name as shown below.
- The numeral appearing to the right of each component part indicates the quantity of parts for each assembly unit.

PART NO.	DESCRIPTION	Q'TY	REMARKS
2F5-83310-60	FRONT FLASHER LIGHT ASSY	2	
115-83311-60	.BULB (6V-18W)	1	

4. Applicable colours of graphics are represented in the “REMARKS” as shown below.

PART NO.	DESCRIPTION	Q'TY	REMARKS
2N4-24110-00-X5	FUEL TANK COMP.	2	MXR
3J1-24240-10	.GRAPHIC, FUEL TANK	1	FOR MXR

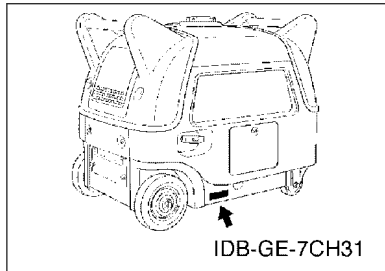
5. Note that the illustrations for reference in finding parts numbers are not to be used for assembling. When assembling, please use the applicable service manual.

6. The asterisk (\*) before a reference number indicates modified items after the first edition.

# FOREWORD

7. Applicable Serial No.

Frame Serial No.



8. Applicable Colour Code (The (\*) mark shows Model colour.)

Abbreviation	Colour Name	Colour Code
PBS3(*)	PURPLISH BLUE SOLID 3	0714

9. Applicable Starting Serial No.

\*\*\*\*\*Serial NO.

Model	Model Code	Destination	Voltage	Serial NO.
EF3000iSE	7CHN	AFR,CHN,SEA	220V-50Hz	7CH-2500101
EF3000iSE	7CHN	AUS	230V-50Hz	7CH-2510101
EF3000iSE	7CHN	KOR,PEL,PHL,SAU	230V-60Hz	7CH-2540101

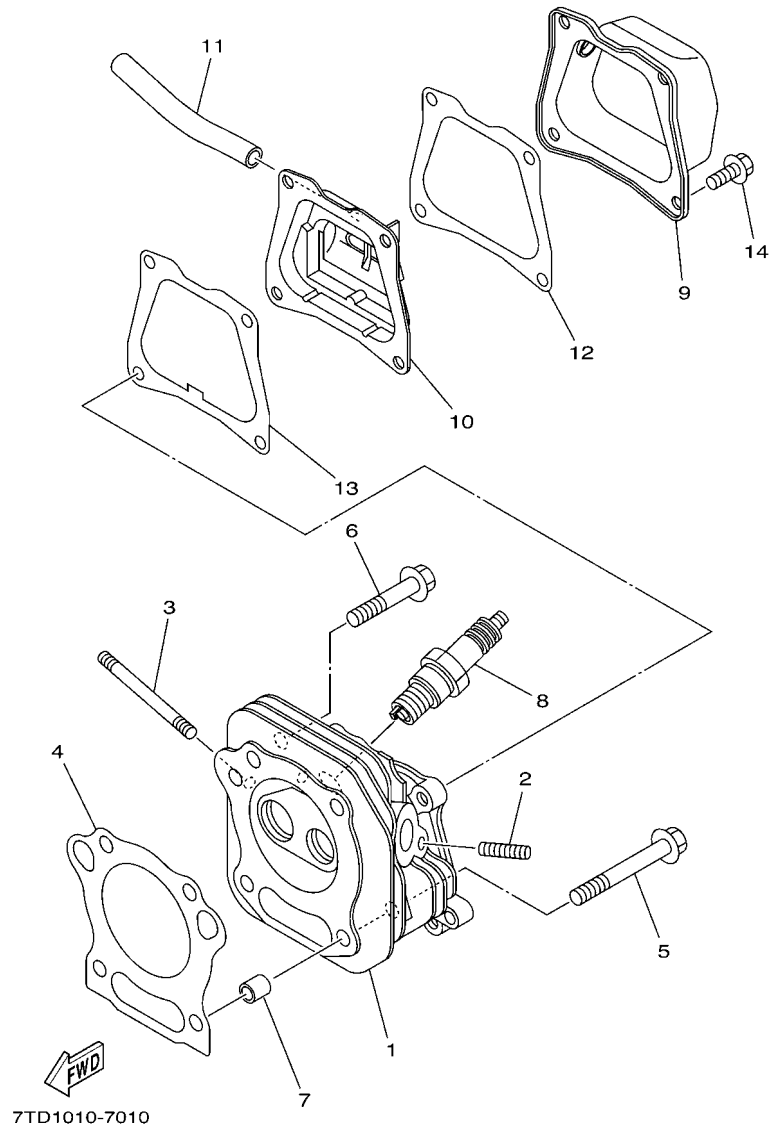
# CONTENTS

CYLINDER.....	1
CRANKSHAFT & PISTON.....	2
CAMSHAFT & VALVE.....	3
AIR SHROUD & STARTER.....	4
INTAKE.....	5
CARBURETOR.....	6
EXHAUST.....	8
CRANKCASE.....	9
FRAME.....	10
FRAME 2.....	11
FRAME 3.....	13
FUEL TANK.....	15
MAGNETO.....	16
STARTING MOTOR.....	17
GENERATOR.....	18
CONTROL BOX.....	19
LABELS.....	22

## INDEX

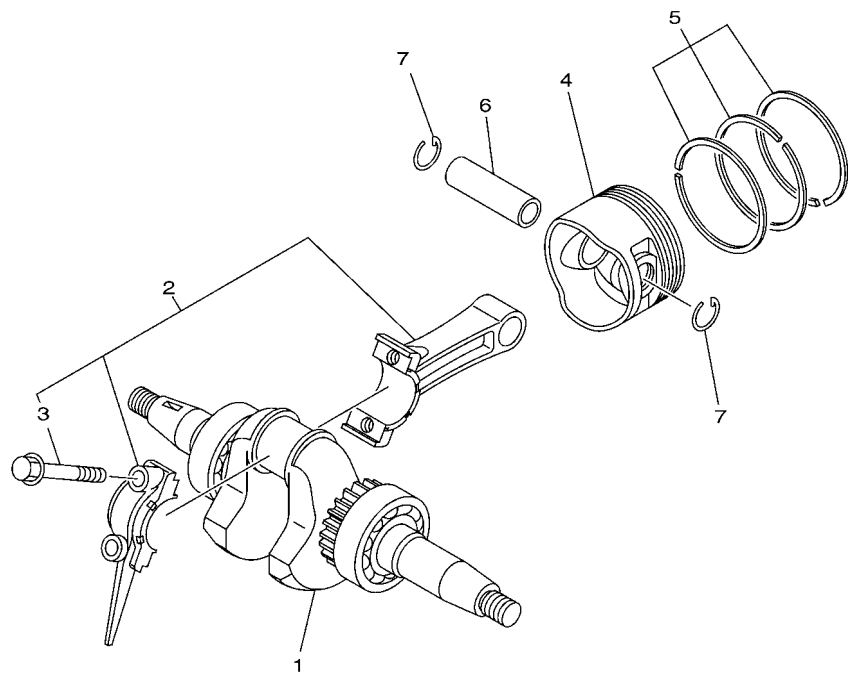
NUMERICAL INDEX.....	23
----------------------	----

**FIG. 1 CYLINDER**



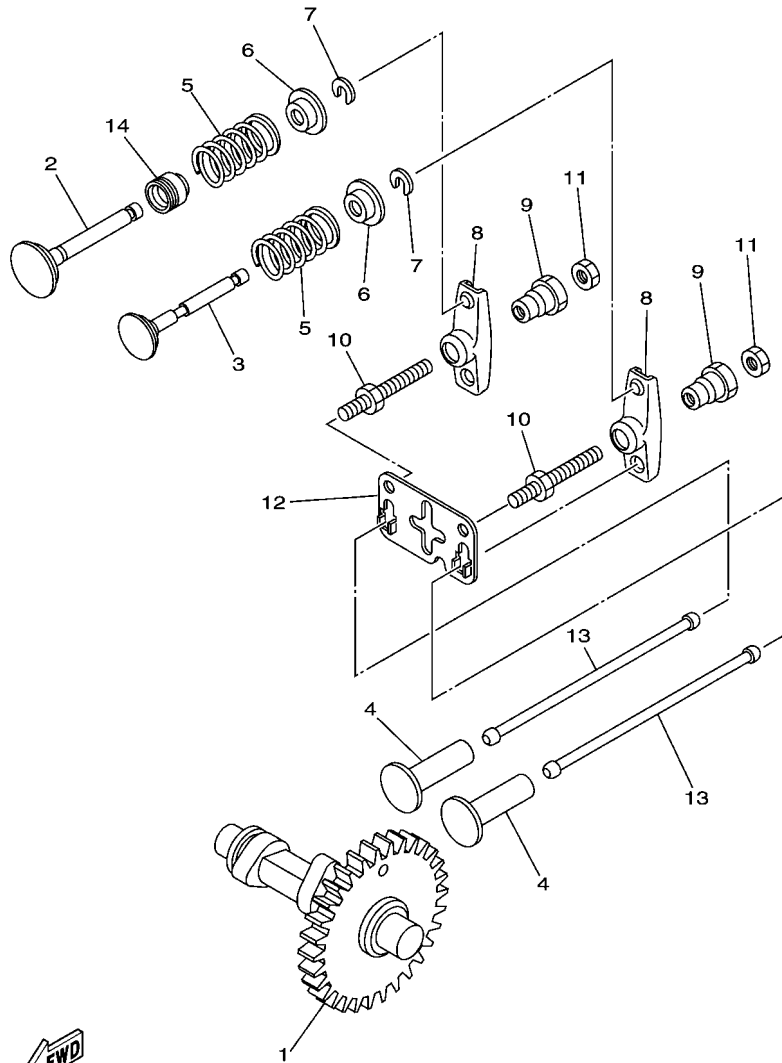
REF. NO.	PART NO.	DESCRIPTION	7CHN				REMARKS
1	7CN-E1111-11	HEAD, CYLINDER 1	1				
2	95602-06615	BOLT, STUD	2				
3	90116-06807	BOLT, STUD	2				
4	7CN-E1181-01	GASKET, CYLINDER HEAD 1	1				
5	95822-08065	BOLT, FLANGE	2				
6	95822-08045	BOLT, FLANGE	2				
7	99530-10114	PIN, DOWEL	2				
8	94702-00331	PLUG, SPARK (NGK BPR4ES)	1				
9	7CN-E1191-00	COVER, CYLINDER HEAD 1	1				
10	7CN-E1160-00	BREATHER ASSY	1				
11	90445-13800	HOSE	1				
12	7CN-E1169-01	GASKET, BREATHER COVER	1				
13	7CN-E1193-00	GASKET, HEAD COVER 1	1				
14	95822-06012	BOLT, FLANGE	4				

**FIG. 2 CRANKSHAFT & PISTON**



7WL1010-A020

REF. NO.	PART NO.	DESCRIPTION	7CHN				REMARKS
1	7CN-E1400-90	CRANKSHAFT ASSY	1				
2	7CN-E1650-11	CONNECTING ROD ASSY	1				
3	7CN-E1654-00	.BOLT, CONNECTING ROD	2				
4	7CN-E1631-10-A0	PISTON (STD)	1				
	7CN-E1635-00	PISTON (0.25MM O/S)	1				AP
	7CN-E1636-00	PISTON (0.50MM O/S)	1				AP
5	7CN-E1610-00	PISTON RING SET (STD)	1				
	7CN-E1610-10	PISTON RING SET (0.25MM O/S)	1				AP
	7CN-E1610-20	PISTON RING SET (0.50MM O/S)	1				AP
6	7CN-E1633-00	PIN, PISTON	1				
7	93450-17828	CIRCLIP	2				

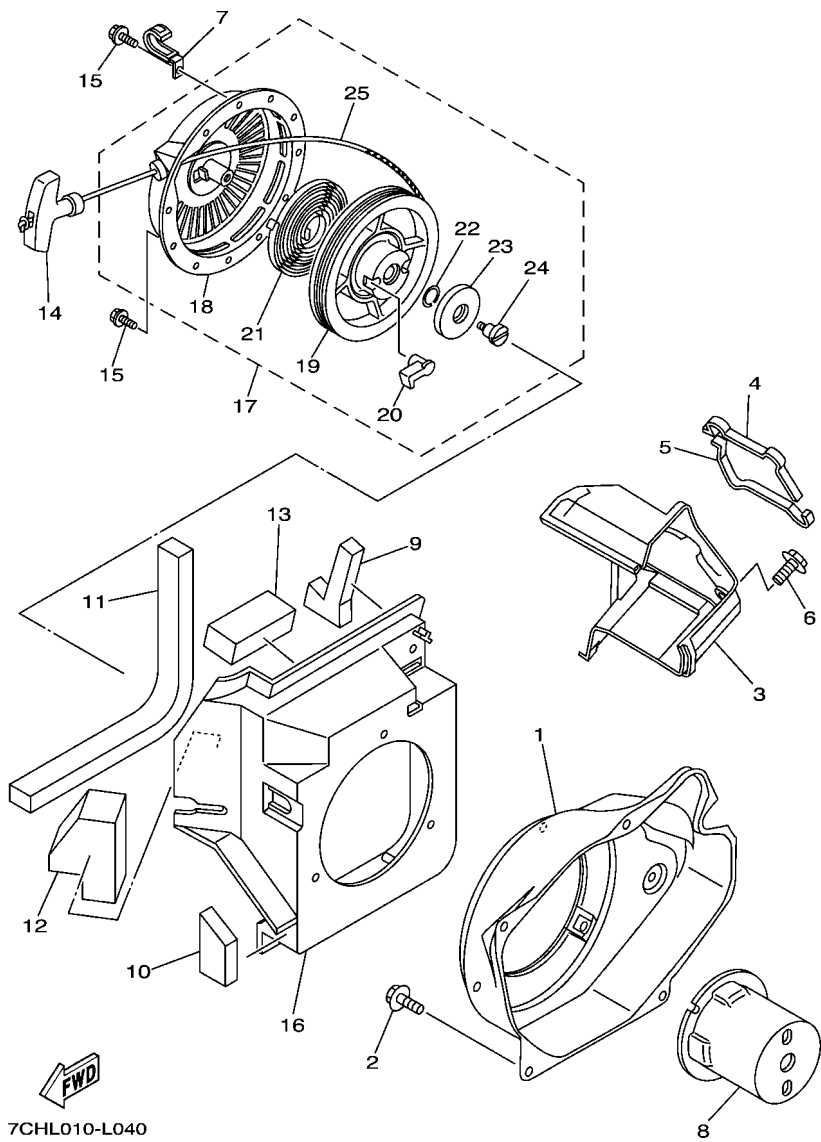


  
 7VUG110-K030

**FIG. 3 CAMSHAFT & VALVE**

REF. NO.	PART NO.	DESCRIPTION	7CHN				REMARKS
1	7CN-E2170-00	CAMSHAFT ASSY 1	1				
2	7CN-E2111-00	VALVE, INTAKE	1				
3	7CN-E2121-00	VALVE, EXHAUST	1				
4	7CN-E2153-00	LIFTER, VALVE	2				
5	90501-20800	SPRING, COMPRESSION	2				
6	7CN-E2117-00	RETAINER, VALVE SPRING	2				
7	7CN-E2118-00	COTTER, VALVE	2				
8	7CN-E2151-00	ARM, VALVE ROCKER	2				
9	7CN-E2165-00	PIVOT, ROCKER ARM	2				
10	7CN-E2157-01	BOLT	2				
11	7CN-E2158-01	NUT, LOCK	2				
12	7CN-E2155-01	GUIDE, PUSH ROD	1				
13	7CN-E2154-00	ROD, VALVE PUSH	2				
14	7DH-E2119-01	SEAL, VALVE STEM	1				

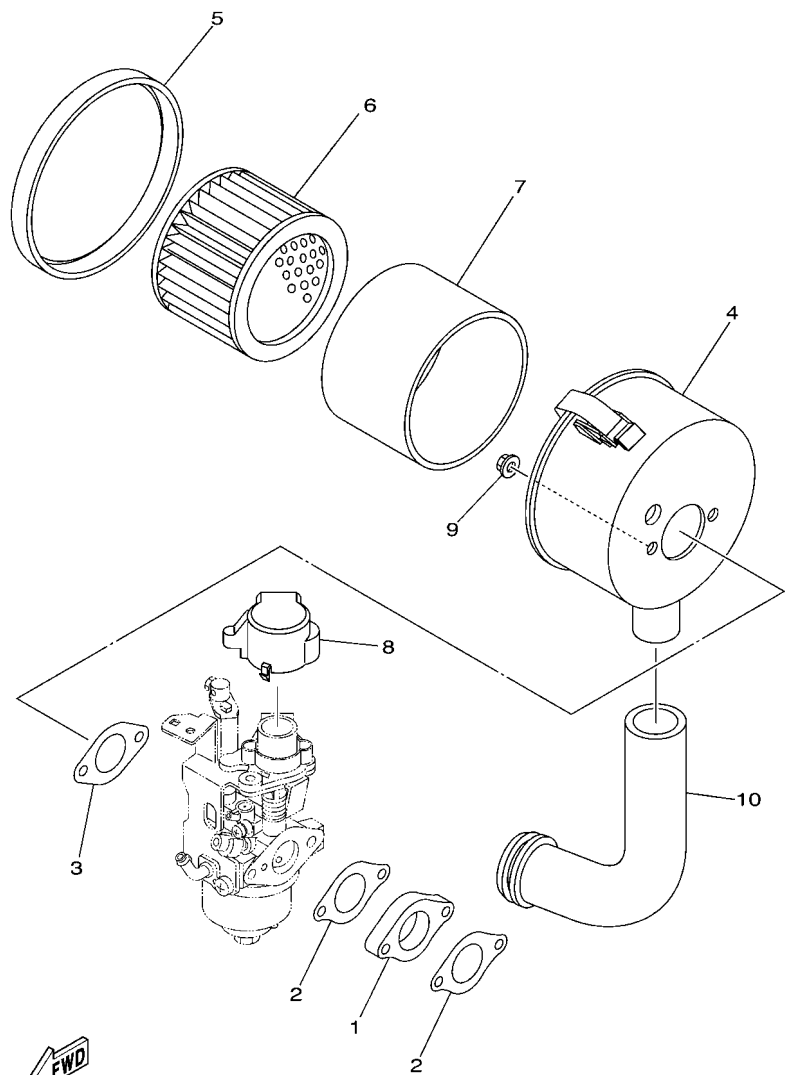




**FIG. 4 AIR SHROUD & STARTER**

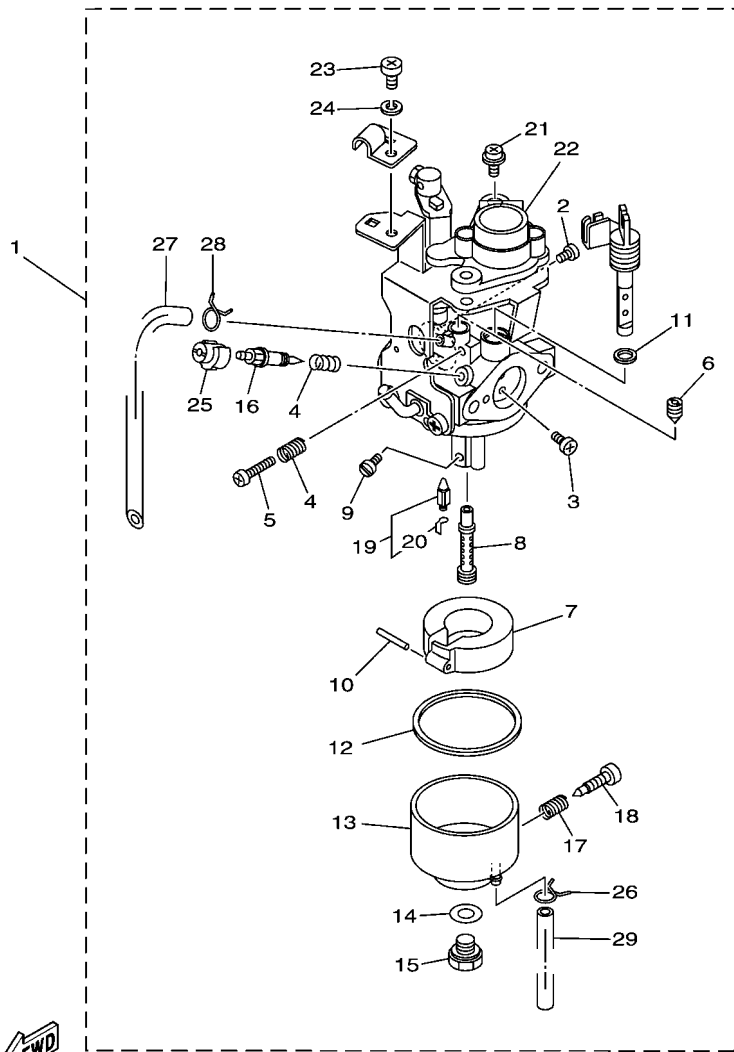
REF. NO.	PART NO.	DESCRIPTION	7CHN				REMARKS
1	7CN-E2610-10	FAN CASE ASSY	1				
2	95802-06012	BOLT, FLANGE	4				
3	7CN-E2651-01	AIR SHROUD, CYLINDER 1	1				
4	7CP-E2658-00	DAMPER, AIR SHROUD 1	1				
5	7CP-E2659-00	DAMPER, AIR SHROUD 2	1				
6	95822-06012	BOLT, FLANGE	1				
7	90462-05061	CLAMP	1				
8	7CN-E5723-00	PULLEY, STARTER	1				
9	7CH-12684-00	DAMPER, DUCT 1	1				
10	7WL-12685-00	DAMPER, DUCT 2	1				
11	7WL-12686-00	DAMPER, DUCT 3	1				
12	7WL-12223-00	SEAL	1				
13	7WL-12877-00	SEAL	1				
14	7TD-15755-00	HANDLE, STARTER	1				
15	95807-06020	BOLT, FLANGE	3				
16	7CP-E2616-00	COVER, FAN CASE	1				
17	7CP-E5710-02	STARTER ASSY	1				
18	7CP-E5711-00	.CASE, STARTER	1				
19	7CN-E5714-02	.DRUM, SHEAVE	1				
20	7CN-E5741-01	.PAWL, DRIVE	2				
21	7CN-E5713-00	.SPRING, STARTER	1				
22	7CN-E5715-00	.SPRING, FRICTION	1				
23	7CN-E5716-01	.PLATE, DRIVE	1				
24	7CN-E5793-00	.SCREW	1				
25	7CP-E5751-00	.WIRE, STARTER	1				

**FIG. 5 INTAKE**



7CHB010-D050

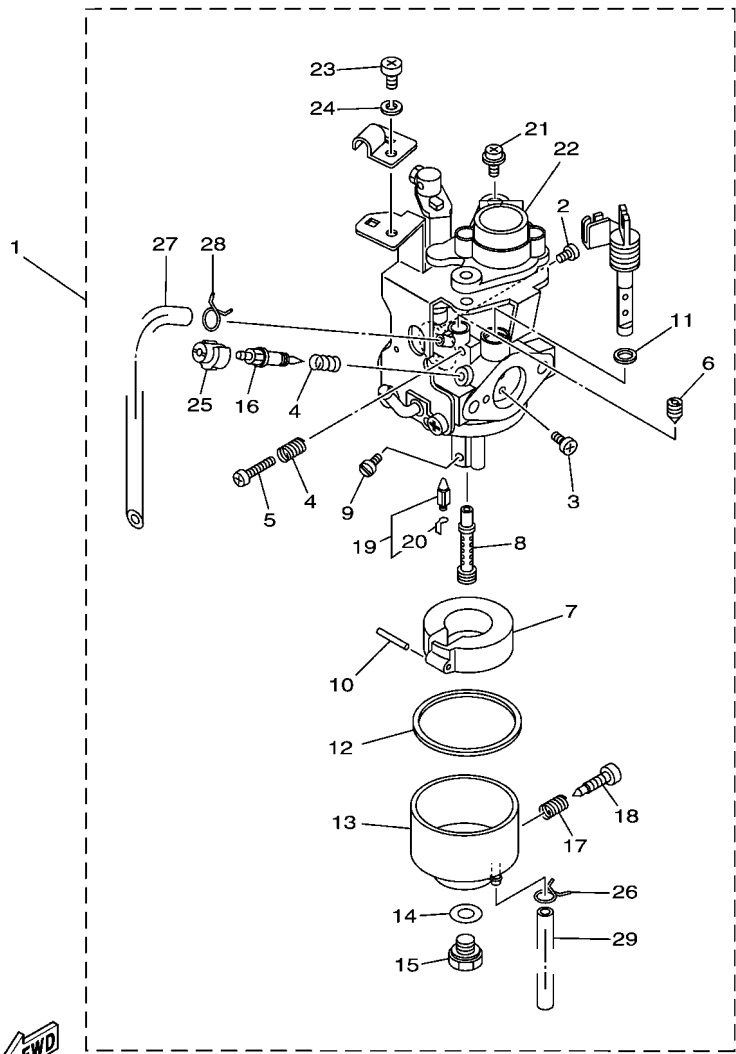
REF. NO.	PART NO.	DESCRIPTION	7CHN				REMARKS
1	7CN-E3596-00	JOINT, CARBURETOR 2	1				
2	7CN-E3557-01	GASKET	2				
3	7CN-E3567-01	GASKET	1				
4	7CP-E4411-00	CASE, AIR CLEANER 1	1				
5	7CP-E4472-00	PLATE, ELEMENT	1				
6	7CP-E4451-00	ELEMENT, AIR CLEANER	1				
7	7CP-E4461-00	ELEMENT, AIR CLEANER 2	1				
8	7VU-14293-00	COVER 1	1				
9	95702-06500	NUT, FLANGE	2				
10	7CP-E4453-00	JOINT, AIR CLEANER 1	1				



7CHB010-D062

FIG. 6 CARBURETOR

REF. NO.	PART NO.	DESCRIPTION	7CHN				REMARKS
1	7CP-E4101-00	CARBURETOR ASSY 1	1				
2	7RH-14216-00	.SCREW	2				
3	7RH-14486-00	.SCREW, ROD	2				
4	73A-14212-00	.SPRING	2				
5	1WG-14922-00	.SCREW, THROTTLE	1				
6	620-14142-37-A0	.JET, PILOT (#37.5)	1				
7	7LG-14185-00	.FLOAT	1				
8	7NN-1495F-1B	.NOZZLE, MAIN	1				
9	1HX-1423E-40-A0	.JET, MAIN (#101.3)	1				
10	22F-14186-00	.PIN, FLOAT	1				
11	7X9-14239-00	.SEAL	1				
12	7G0-14184-00	.GASKET, FLOAT CHAMBER	1				
13	7TD-14181-00	.BODY, FLOAT CHAMBER 1	1				
14	7G0-14227-00	.WASHER	1				
15	7TD-14162-00	.BOLT, HOLDING	1				
16	7NJ-14211-00	.SCREW, PILOT ADJUSTING	1				
17	73A-14212-00	.SPRING	1				
18	7E1-14191-00	.PLUG, DRAIN	1				
19	7LG-14150-11	.NEEDLE ASSY	1				
20	7EG-14159-00	.CLIP	1				
21	4SV-24453-00	.SCREW	2				
22	7CF-81802-09	.MOTOR UNIT ASSY.	1				
23	98502-05008	.SCREW, PAN HEAD	1				
24	92902-05100	.WASHER, SPRING	1				
25	7LV-14118-00	.CAP	1				
26	22F-14139-00	.CLIP, PIPE	1				
27	7WL-14197-00	.PIPE	1				

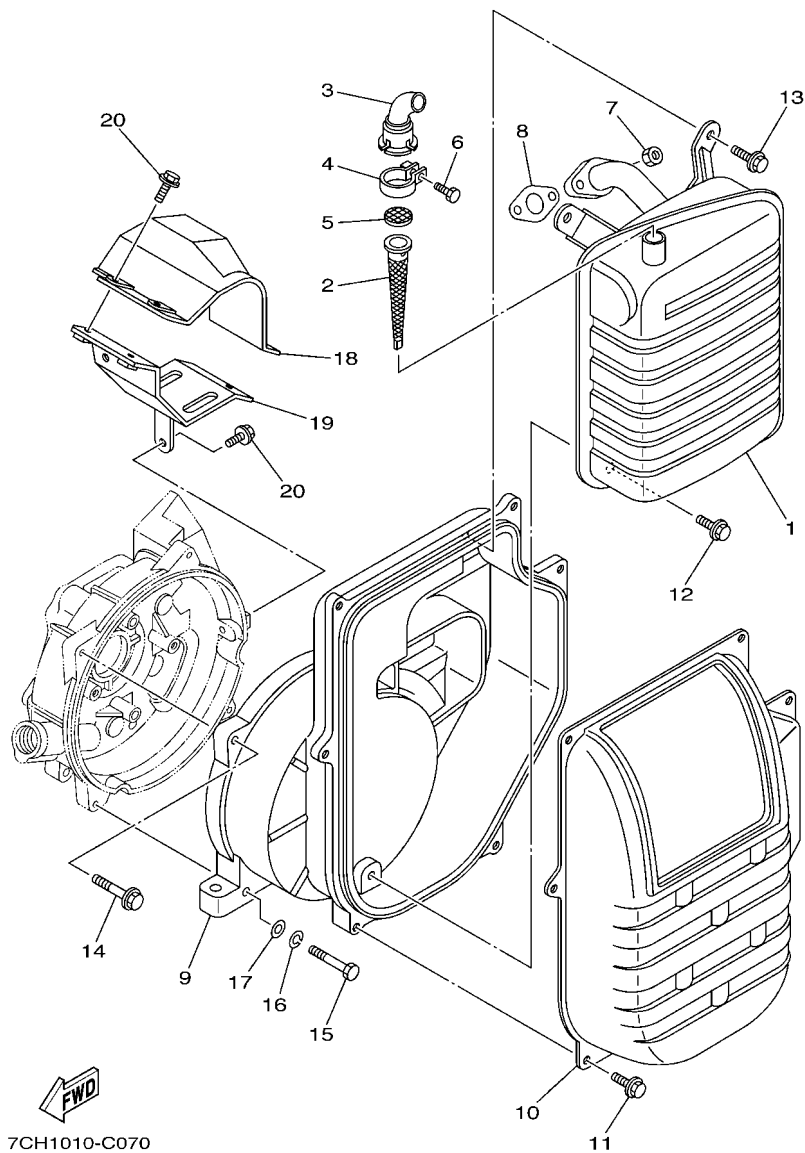


7CHB010-D062

**FIG. 6 CARBURETOR**

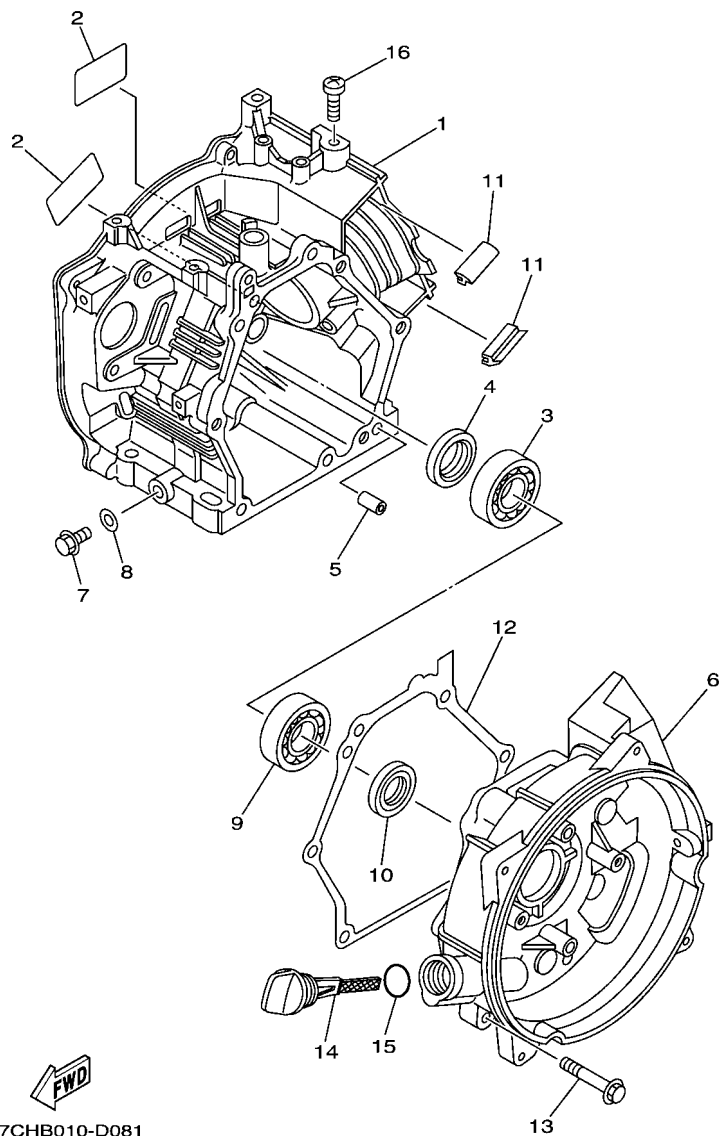
REF. NO.	PART NO.	DESCRIPTION	7CHN					REMARKS
28	14X-14937-00	.CLIP	1					
29	7CP-E4196-00	.PIPE, OVER FLOW 1	1					

**FIG. 7 EXHAUST**

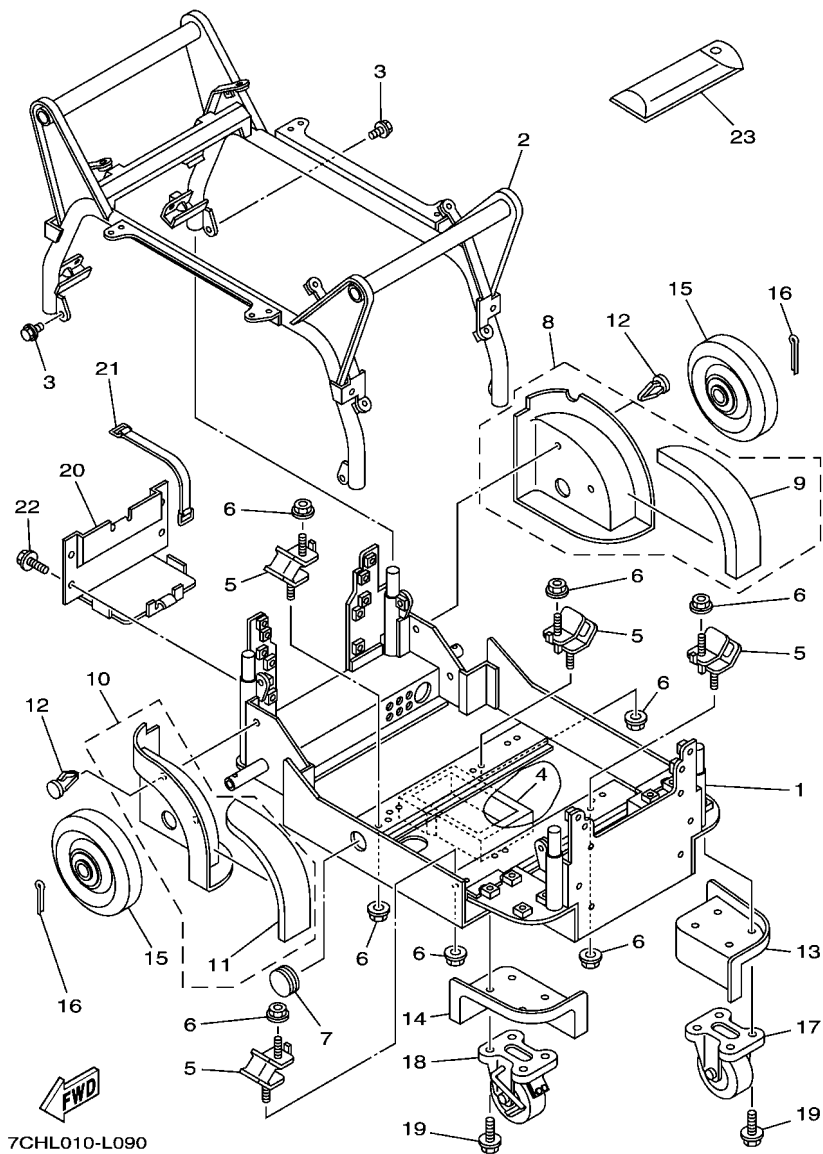


REF. NO.	PART NO.	DESCRIPTION	7CHN				REMARKS
1	7CH-14711-00	MUFFLER 1	1				
2	7WL-14786-00	ARRESTER, SPARK	1				
3	7WL-14799-00	CAP	1				
4	7NJ-14788-00	BAND, SILENCER	1				
5	7NJ-1479E-00	NET, WIRE 2	1				
6	90153-05024	SCREW, HEXAGON	1				
7	95307-06600	NUT	2				
8	JA9-14613-00	GASKET, EXHAUST PIPE	1				
9	7WL-14627-00	COVER, EXHAUST	1				
10	7CH-14637-00	EXHAUST COVER ASS'Y	1				
11	95807-06012	BOLT, FLANGE	6				
12	95807-08012	BOLT, FLANGE	1				
13	95807-08016	BOLT, FLANGE	2				
14	95807-06030	BOLT, FLANGE	3				
15	97007-06045	BOLT	1				
16	92907-06100	WASHER, SPRING	1				
17	92907-06600	WASHER, PLATE	1				
18	7WL-12690-00	DUCT COMP.	1				
19	7WL-14430-00	DUCT ASSY	1				
20	95807-06012	BOLT, FLANGE	5				

**FIG. 8 CRANKCASE**

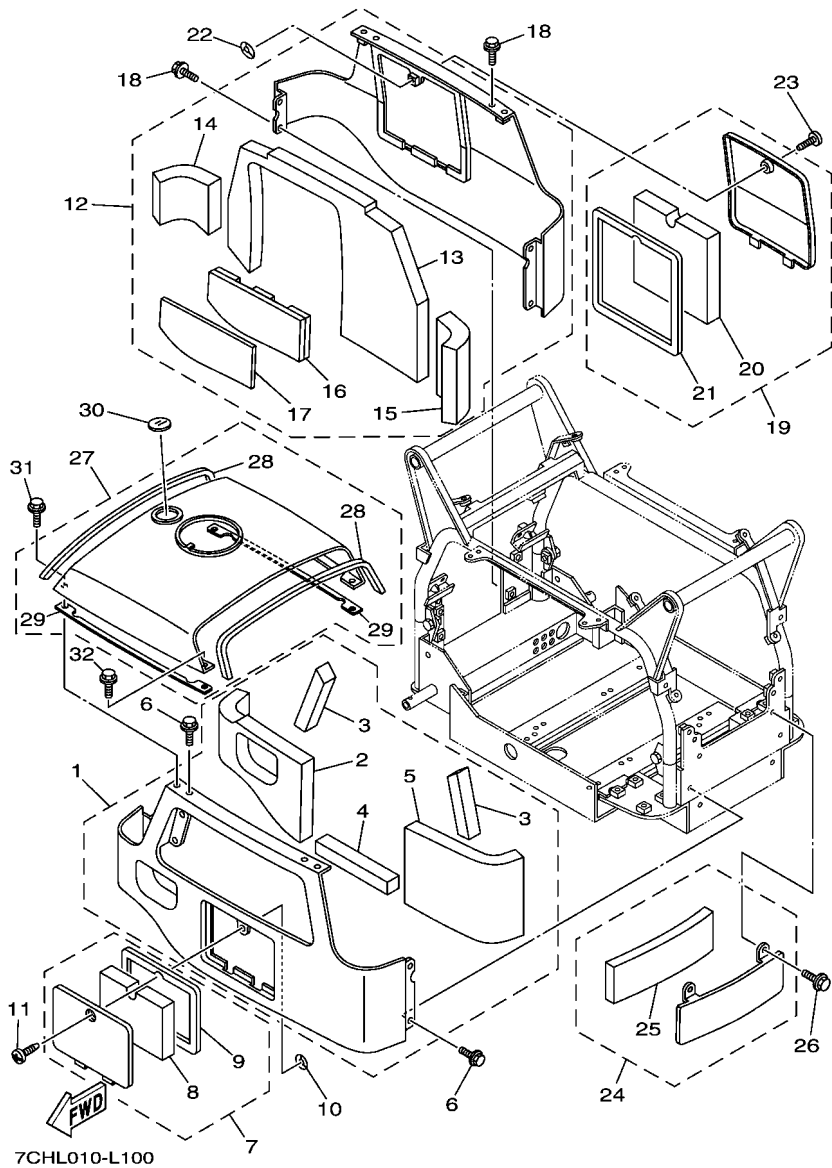


REF. NO.	PART NO.	DESCRIPTION	7CHN				REMARKS
1	7CN-E5111-50	CRANKCASE 1	1				
2	7CP-E5315-00	SEAL, CRANKCASE	2				
3	93306-205XE	BEARING	1				
4	93102-25806	OIL SEAL	1				
5	99530-08016	PIN, DOWEL	2				
6	7CP-E5421-00	COVER, CRANKCASE 2	1				
7	95022-10016	BOLT, FLANGE	1				
8	90430-10801	GASKET	1				
9	93306-205XE	BEARING	1				
10	93102-25806	OIL SEAL	1				
11	7CP-E5494-00	SEAL, PROTECTOR	2				
12	7CN-E5451-01	GASKET, CRANKCASE COVER 1	1				
13	95822-08035	BOLT, FLANGE	6				
14	7CN-E5362-20	PLUG, OIL LEVEL	1				
15	93210-22805	O-RING	1				
16	98502-08012	SCREW, PAN HEAD	1				



**FIG. 9 FRAME**

REF. NO.	PART NO.	DESCRIPTION	7CHN				REMARKS
1	7WL-22840-01	FRAME, CARRIER COMP.	1				
2	7WL-22850-00	FRAME, CARRIER COMP.	1				
3	95807-06012	BOLT, FLANGE	4				
4	7WL-2289L-00	SEAL 22	1				
5	7LG-22891-00	INSULATOR, MOUNTING	4				
6	95707-08500	NUT, FLANGE	8				
7	90338-28239	PLUG	1				
8	7WL-21600-00	REAR FENDER ASSY.	1				
9	7WL-21541-00	.DAMPER 1	1				
10	7WL-21600-10	REAR FENDER ASSY.	1				
11	7WL-21542-00	.DAMPER 2	1				
12	90269-10002	RIVET	4				
13	7WL-21556-00	FENDER, FRONT 2	1				
14	7WL-21556-10	FENDER, FRONT 2	1				
15	7CH-23781-C0	WHEEL	2				
16	91401-30040	PIN, COTTER	2				
17	7CH-22845-C0	CASTER 1	1				
18	7CH-22846-C1	CASTER 2	1				
19	95807-08016	BOLT, FLANGE	8				
20	7WL-82122-00	SEAT, BATTERY	1				
21	3V6-82131-00	BAND, BATTERY	1				
22	95807-06012	BOLT, FLANGE	4				
23	7TA-28100-00	TOOL KIT	1				



**FIG. 10 FRAME 2**

REF. NO.	PART NO.	DESCRIPTION	7CHN	REMARKS
1	7CH-228A0-00-P0	COVER ASSY 1	1	PBS3
2	7CH-22873-00	.SEAL 1	1	
3	7CH-22897-00	.SEAL 14	2	
4	7CH-2289N-00	.SEAL 24	1	
5	7CH-2289R-00	.SEAL 25	1	
6	95807-06012	BOLT, FLANGE	6	
7	7CH-228B0-00-P0	COVER ASSY 2	1	PBS3
8	7CH-22874-00	.SEAL 2	1	
9	7WL-2281E-00	.SEAL, RUBBER 2	1	
10	4U5-2176E-00	PLATE	1	
11	90149-06194	SCREW	1	
12	7CH-228C0-11-P0	COVER ASSY 3	1	PBS3
13	7CH-22876-10	.SEAL 4	1	
14	7CH-2289T-00	.SEAL 26	1	
15	7CH-2289U-00	.SEAL, 7	1	
16	7CH-22878-00	.SEAL 6	1	
17	7CH-2289V-00	.SEAL, 28	1	
18	95807-06012	BOLT, FLANGE	6	
19	7CH-228D0-00-P0	COVER ASSY 4	1	PBS3
20	7CH-22877-00	.SEAL, 5	1	
21	7WL-2281F-00	.SEAL, RUBBER 3	1	
22	4U5-2176E-00	PLATE	1	
23	90149-06194	SCREW	1	
24	7WL-228E0-00-P0	COVER ASSY 5	1	PBS3
25	7WL-22878-00	.SEAL 6	1	
26	95807-06010	BOLT, FLANGE	4	
27	7CH-228F0-11-P0	COVER ASSY 6	1	PBS3



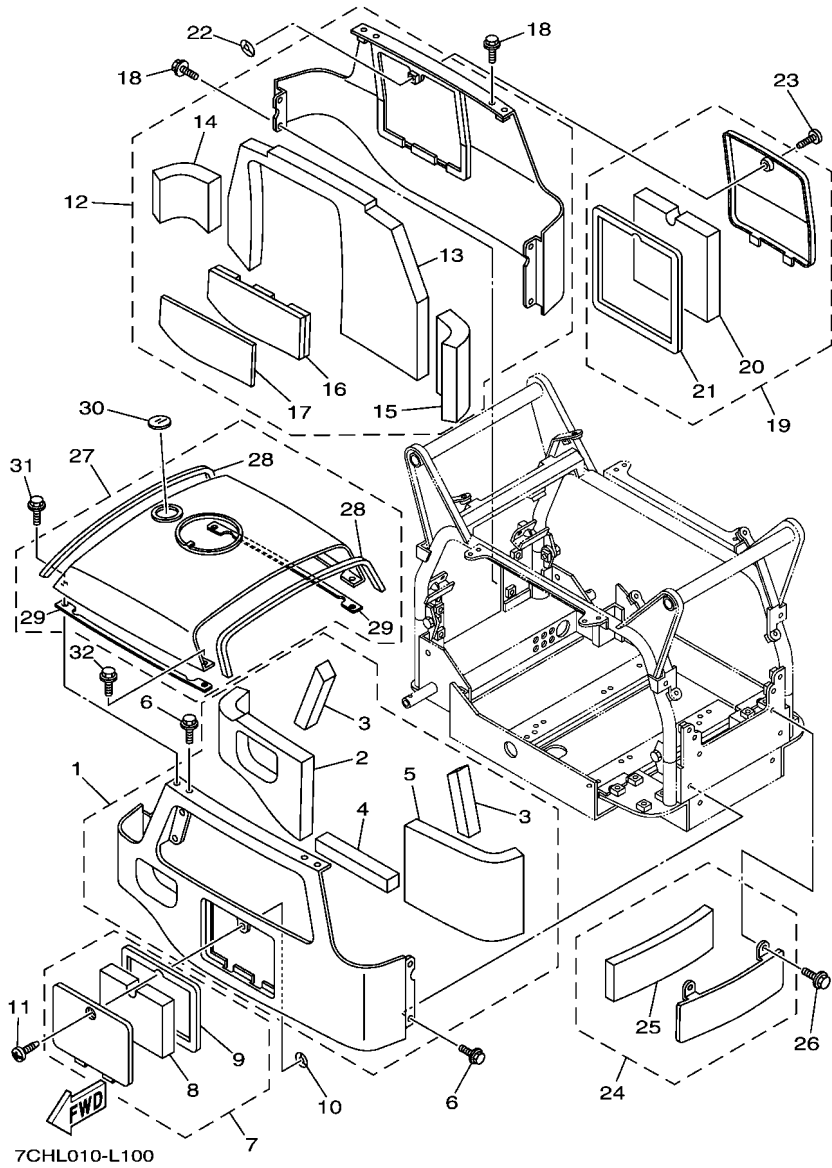
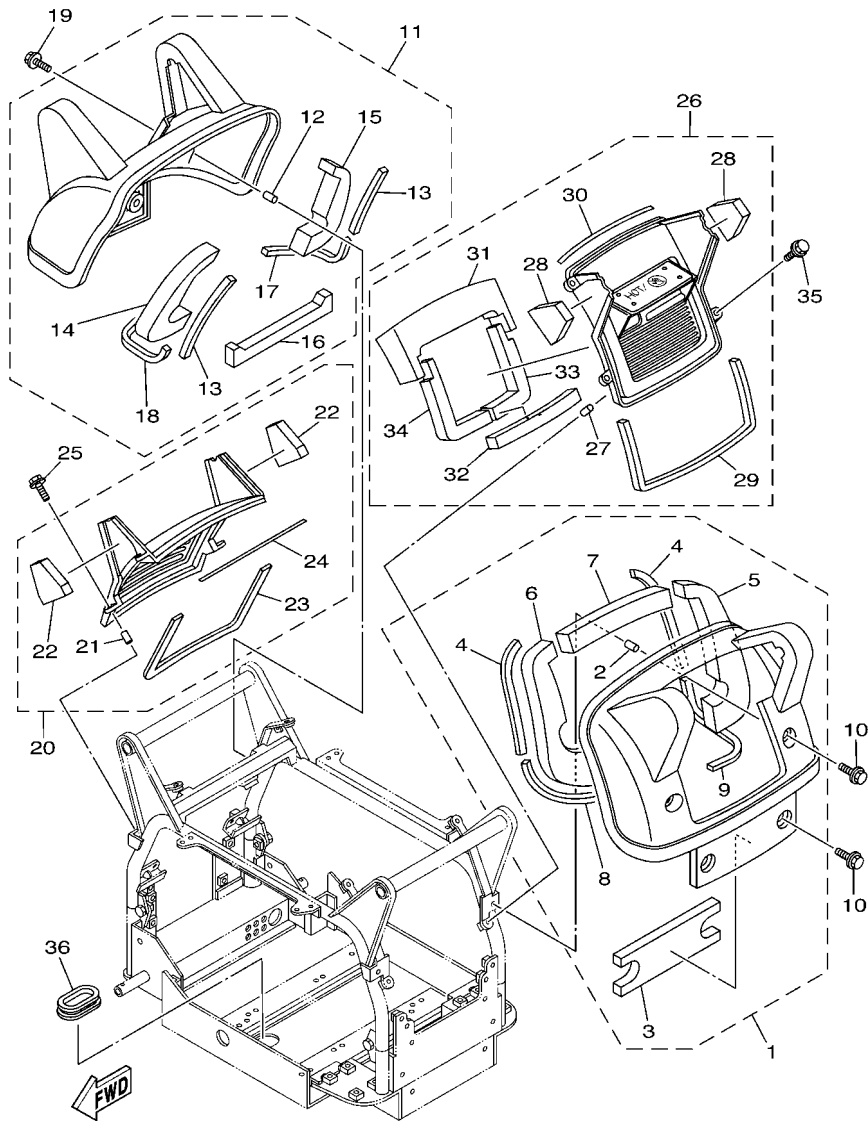


FIG. 10 FRAME 2

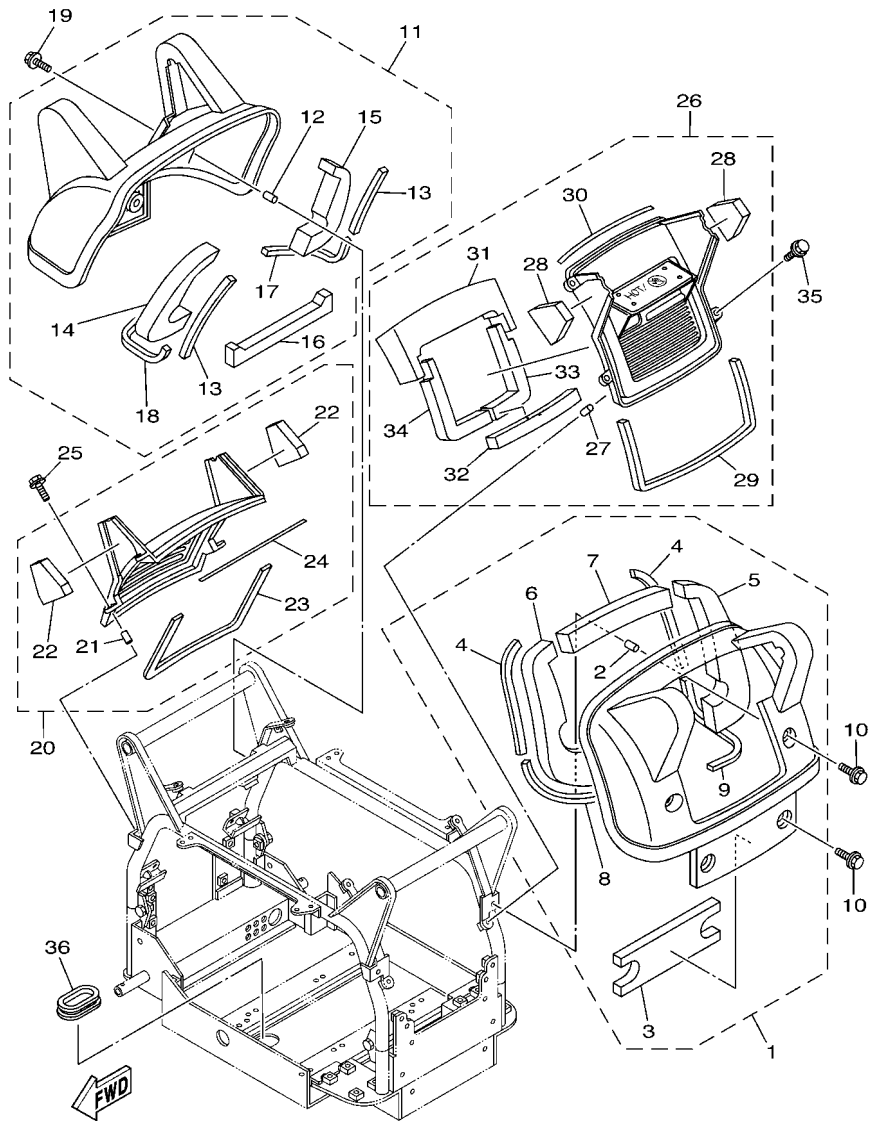
REF. NO.	PART NO.	DESCRIPTION	7CHN				REMARKS
28	7WL-22875-00	.SEAL 3	2				
29	7CH-22896-00	.SEAL 13	2				
30	7WL-21764-00	LENS, LEVEL GAUGE	1				
31	95880-06012	BOLT, FLANGE	1				
32	95827-06012	BOLT, FLANGE	3				
<hr/>							
<hr/>							
<hr/>							
<hr/>							
<hr/>							
<hr/>							
<hr/>							
<hr/>							
<hr/>							
<hr/>							



7CH1010-C110

FIG. 11 FRAME 3

REF. NO.	PART NO.	DESCRIPTION	7CHN				REMARKS
1	7CH-228G0-00	COVER ASSY 7	1				
2	7WL-23363-00	.COLLAR 1	4				
3	7CH-22879-00	.SEAL, 7	1				
4	7WL-22885-00	.SEAL 8	2				
5	7CH-22886-00	.SEAL 9	1				
6	7CH-22887-00	.SEAL 10	1				
7	7CH-22889-00	.SEAL 12	1				
8	7WL-2289F-00	.SEAL 17	1				
9	7WL-2289G-00	.SEAL 18	1				
10	95807-06014	BOLT, FLANGE	4				
11	7CH-228H0-00	COVER ASSY 8	1				
12	7WL-23363-00	.COLLAR 1	4				
13	7WL-22885-00	.SEAL 8	2				
14	7CH-22886-00	.SEAL 9	1				
15	7CH-22887-00	.SEAL 10	1				
16	7WL-22899-00	.SEAL 15	1				
17	7WL-2289F-00	.SEAL 17	1				
18	7WL-2289G-00	.SEAL 18	1				
19	95807-06014	BOLT, FLANGE	4				
20	7WL-228J0-00	COVER ASSY 9	1				
21	7WL-23363-00	.COLLAR 1	4				
22	7WL-22888-00	.SEAL 11	2				
23	7WL-22896-00	.SEAL 13	1				
24	7WL-2289A-00	.SEAL 16	1				
25	95807-06014	BOLT, FLANGE	4				
26	7WL-228K0-00	COVER ASSY 10	1				
27	7WL-23363-00	.COLLAR 1	4				

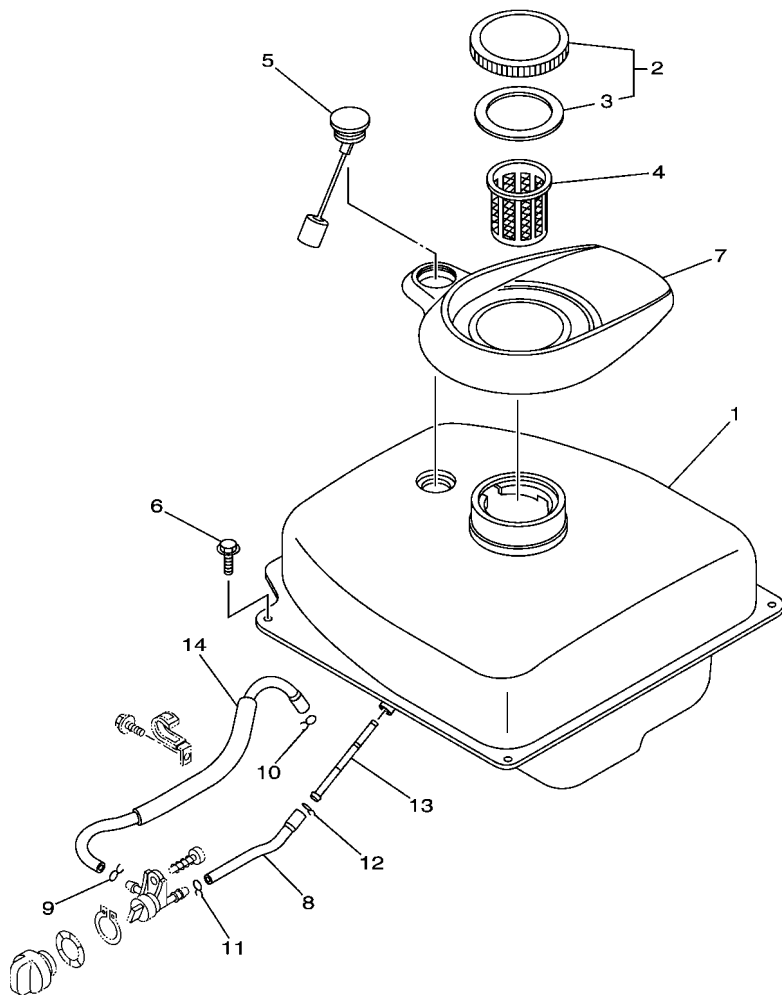


7CH1010-C110

FIG. 11 FRAME 3

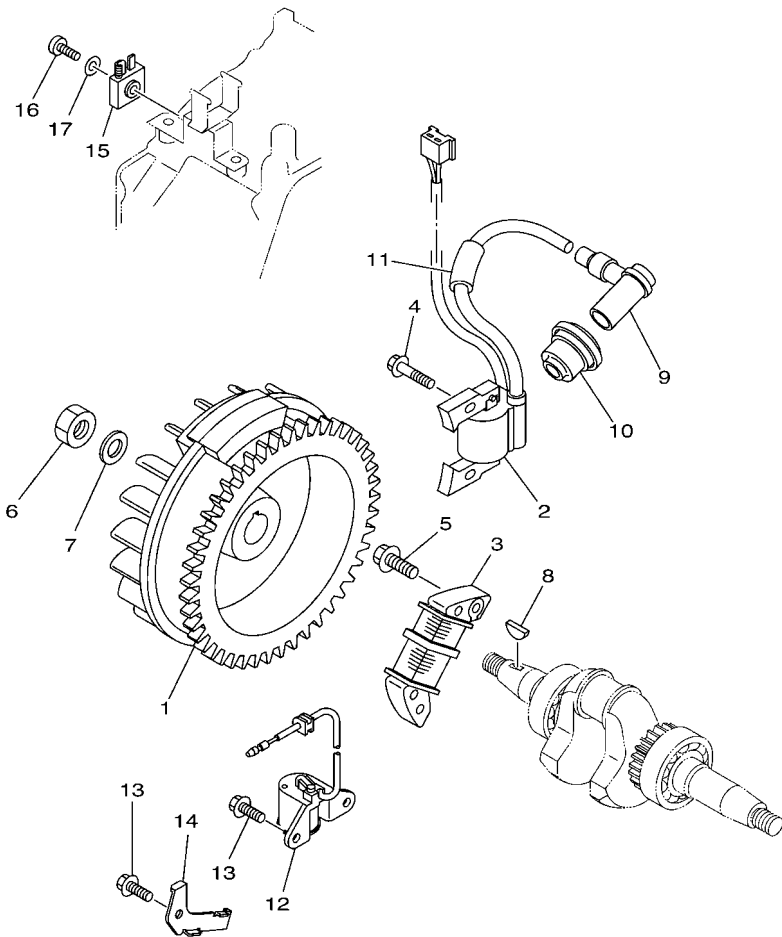
REF. NO.	PART NO.	DESCRIPTION	7CHN	REMARKS
28	7WL-22888-00	.SEAL 11	2	
29	7WL-22896-00	.SEAL 13	1	
30	7WL-2289A-00	.SEAL 16	1	
31	7WL-2289H-00	.SEAL 19	1	
32	7WL-2289J-00	.SEAL 20	1	
33	7WL-2289K-00	.SEAL 21	1	
34	7WL-2289M-00	.SEAL 23	1	
35	95807-06014	BOLT, FLANGE	4	
36	7WL-22857-00	COVER 4	1	

**FIG. 12 FUEL TANK**



7CHL010-L120

REF. NO.	PART NO.	DESCRIPTION	7CHN	REMARKS
1	7WL-24110-01	FUEL TANK COMP.	1	
	7WL-24110-02	FUEL TANK COMP.	1	7CH-6501281 and following
	7WL-24110-02	FUEL TANK COMP.	1	7CH-2540511 and following
2	74T-24610-00	CAP ASSY	1	
	7VU-24610-C0	CAP ASSY	1	7CH-6501281 and following
	7VU-24610-C0	CAP ASSY	1	7CH-2540511 and following
3	796-24612-00	.PACKING, CAP	1	
	7C2-F4612-00	.PACKING, CAP	1	7CH-6501281 and following
	7C2-F4612-00	.PACKING, CAP	1	7CH-2540511 and following
4	630-24167-00	STRAINER	1	
5	7A9-85710-03	FUEL LEVEL GAUGE ASSY	1	
	7CH-85710-C0	FUEL LEVEL GAUGE ASSY	1	7CH-6501281 and following
	7CH-85710-C0	FUEL LEVEL GAUGE ASSY	1	7CH-2540511 and following
6	95807-06012	BOLT, FLANGE	4	
7	7CH-2414G-11	SEAL	1	
8	7WL-24311-01	PIPE, FUEL 1	1	
9	90467-08002	CLIP	1	
10	90467-09103	CLIP	1	
11	90467-10008	CLIP	1	
12	90467-11106	CLIP	1	
13	5BM-24514-00	NET, FILTER 1	1	
14	7WL-24312-00	PIPE 2	1	

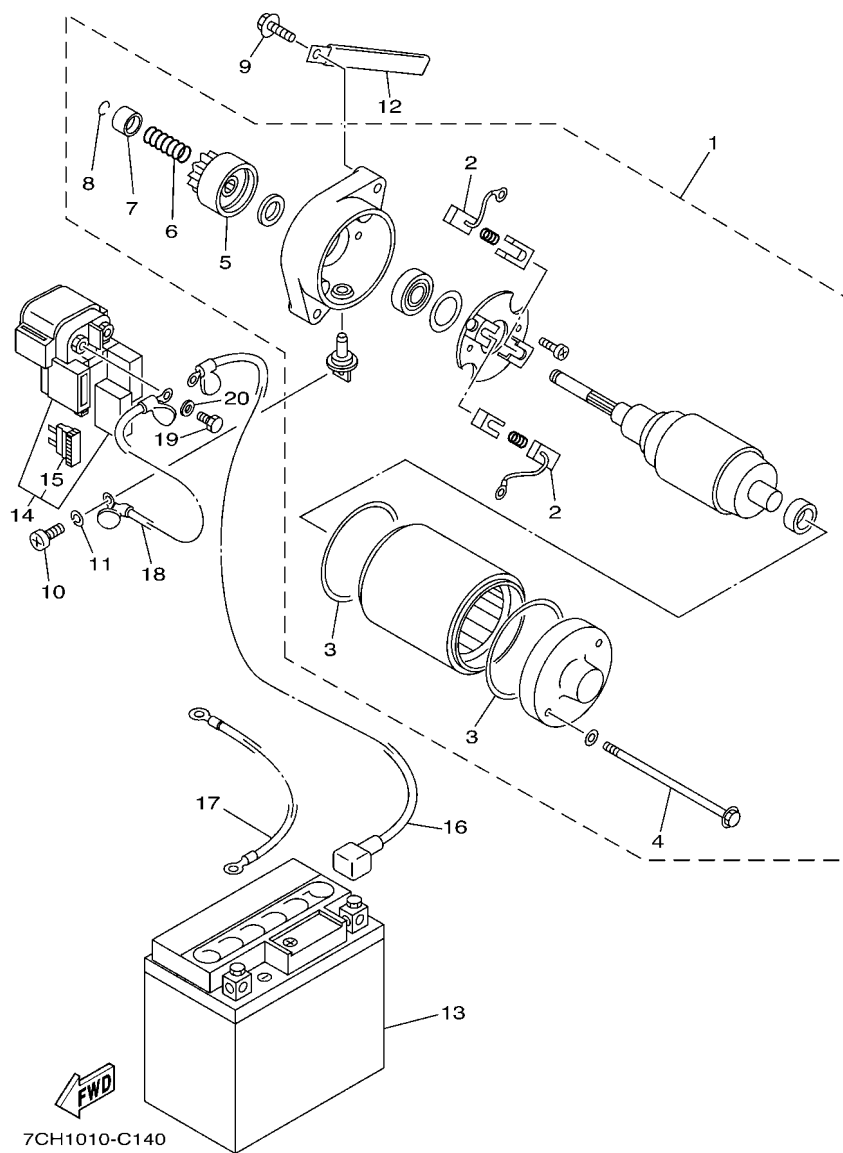


7CH1010-C130

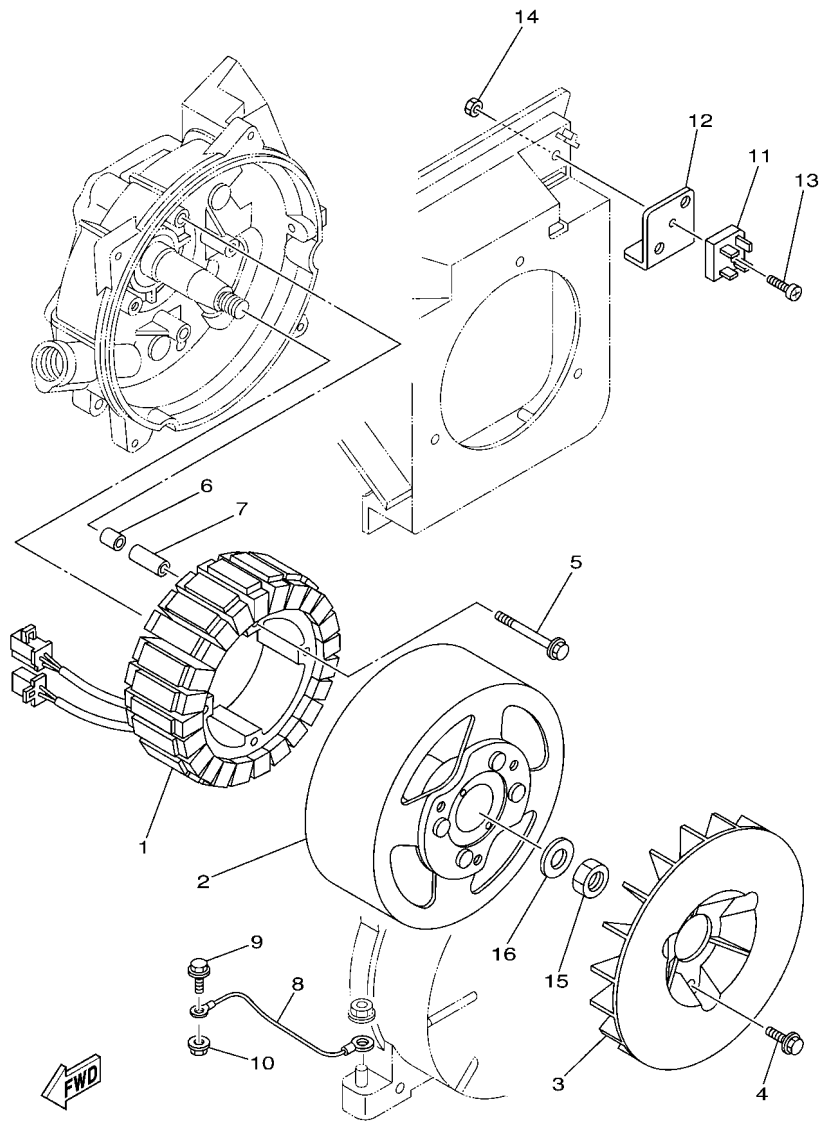
**FIG. 13 MAGNETO**

REF. NO.	PART NO.	DESCRIPTION	7CHN	REMARKS
1	7CN-H5650-40	ROTOR ASSY	1	
2	7CF-H5640-00	T.C.I. UNIT ASSY	1	
3	7CP-H5521-00	COIL ASSY	1	
4	95822-06020	BOLT, FLANGE	2	
5	95822-06025	BOLT, FLANGE	2	
6	90170-14800	NUT	1	
7	92902-14200	WASHER	1	
8	90280-04801	KEY, WOODRUFF	1	
9	7CN-H2370-00	PLUG CAP ASSY	1	
10	7CP-H2372-00	SEAL, PLUG CAP	1	
11	7CP-H2373-00	SEAL, HIGH TENSION CORD	1	
12	7CN-H5720-00	OIL LEVEL GAUGE ASSY	1	
13	95822-06012	BOLT, FLANGE	3	
14	7CN-H5724-00	CLAMP	1	
15	353-81970-M0	RECTIFIER ASSY	1	
16	98507-06020	SCREW, PAN HEAD	1	
17	92907-06600	WASHER, PLATE	1	

**FIG. 14 STARTING MOTOR**



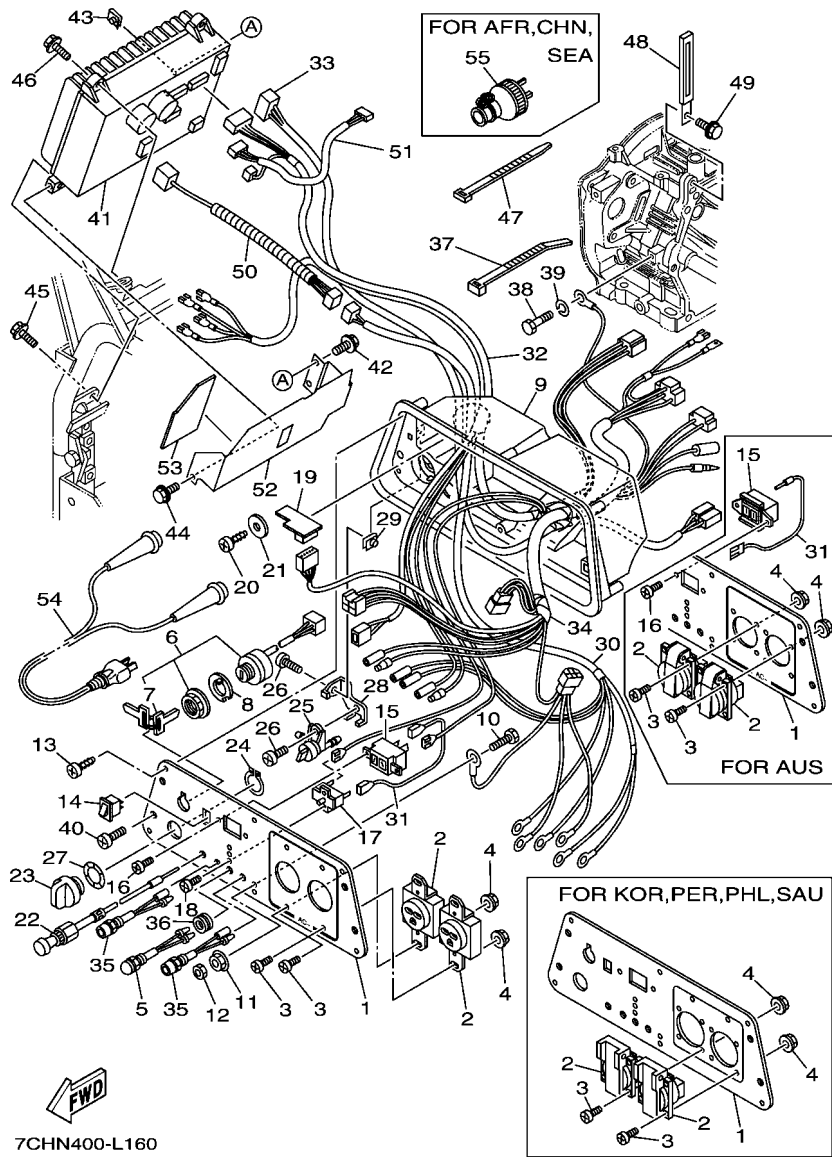
REF. NO.	PART NO.	DESCRIPTION	7CHN				REMARKS
1	7CP-H1800-11	STARTING MOTOR ASSY	1				
2	7CP-H1801-00	.BRUSH SET	1				
3	93210-55669	.O-RING	2				
4	7CP-H1828-00	.SCREW 2	2				
5	7CP-H1807-00	.GEAR ASSY, STARTING MOTOR	1				
6	7CP-H1858-00	.SPRING, RETURN	1				
7	7CP-H1859-00	.STOPPER, PINION	1				
8	7CP-H1833-00	.RING, STOP	1				
9	95822-06020	BOLT, FLANGE	2				
10	98507-05008	SCREW, PAN HEAD	1				
11	92907-05100	WASHER, SPRING	1				
12	90462-05061	CLAMP	1				
13	3VD-82100-01	BATTERY ASSY (YTX12-BS)	1				
14	3EL-81940-02	STARTER RELAY ASSY	1				
15	42X-82151-00	.FUSE (10A-BL)	2				
16	7WL-82115-00	WIRE, PLUS LEAD	1				
17	7WL-82116-00	WIRE, MINUS LEAD	1				
18	7WL-81815-00	CORD, STARTER MOTOR	1				
19	97007-06010	BOLT	2				
20	92907-06600	WASHER, PLATE	2				



7CH1010-C150

**FIG. 15 GENERATOR**

REF. NO.	PART NO.	DESCRIPTION	7CHN				REMARKS
1	7WL-87150-21	STATOR ASSY	1				
2	7WL-87160-01	ROTOR ASSY	1				
3	7WL-87172-00	FAN, GENERATOR	1				
4	95807-06016	BOLT, FLANGE	3				
5	95827-06055	BOLT, FLANGE	4				
6	99530-08012	PIN, DOWEL	2				
7	7WL-8719F-00	TUBE 7	2				
8	7WL-87139-00	LEAD WIRE ASSY 2	1				
9	7CH-85119-00	BOLT	1				
10	95780-06500	NUT, FLANGE	1				
11	7VU-87105-00	RECTIFIER ASSY 1	1				
12	7VU-86515-00	PLATE, HEAT SINK	1				
13	98507-05020	SCREW, PAN HEAD	1				
14	95607-05200	NUT, U FLANGE	1				
15	90170-14403	NUT	1				
16	92907-14200	WASHER	1				



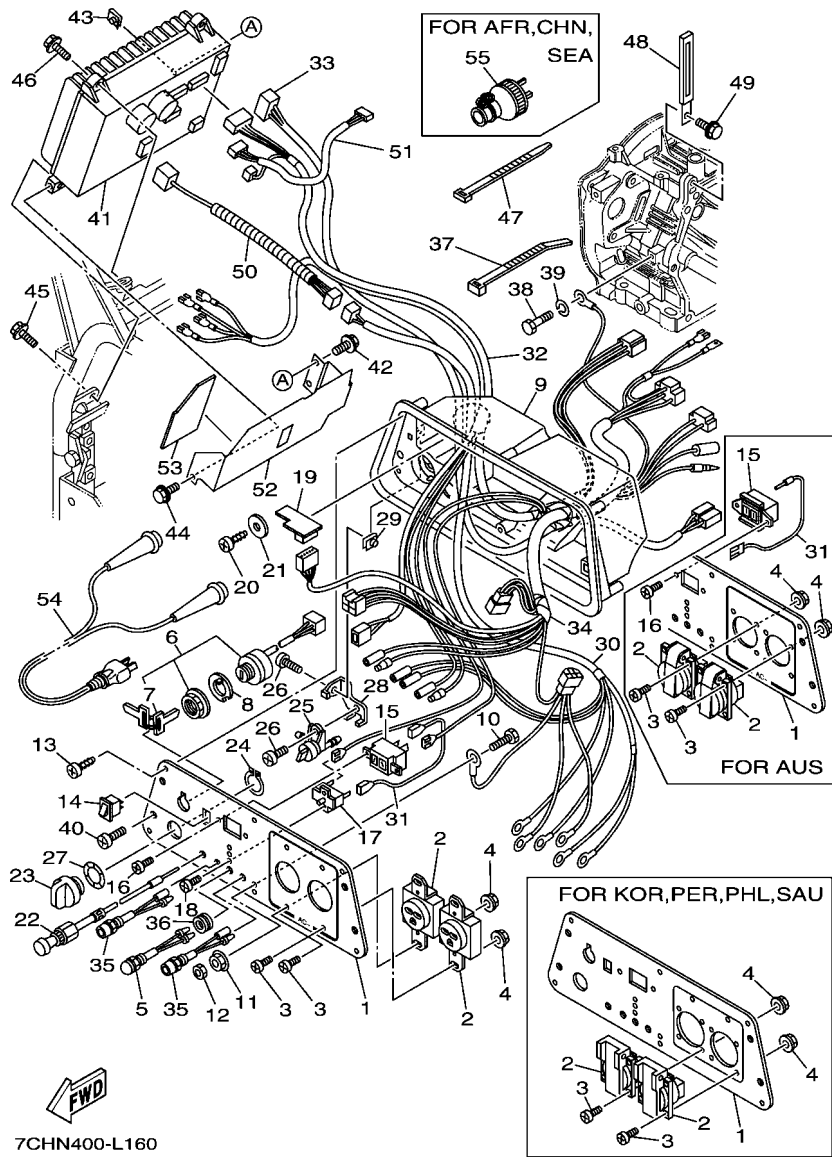
7CHN400-L160

\*1: FOR KOR,PER,PHL,SAU  
\*2: EXCEPT FOR AUS

FIG. 16 CONTROL BOX

REF. NO.	PART NO.	DESCRIPTION	7CHN		REMARKS
1	7CH-87249-G0	PLATE	1		AFR,CHN,SEA
	7CH-87249-N0	PLATE	1		AUS
	7CH-87249-A0	PLATE	1		KOR,PER,PHL,SAU
2	7G7-87221-01	RECEPTACLE 1(WCZ1312-9)	2		AFR,CHN,SEA
	7CK-87221-90	RECEPTACLE 1 (S230E-7-4)	2		AUS, KEDU
	7H7-87221-81	RECEPTACLE 1 (250V-16A)	2		*1, ABL
3	98507-04012	SCREW, PAN HEAD	4		AFR,CHN,SEA
	90151-03032	SCREW, COUNTERSUNK	8		AUS, *1
4	95707-04500	NUT, FLANGE	4		AFR,CHN,SEA
	90179-03478	NUT	8		AUS, *1
5	7CH-83530-G0	PILOT LIGHT ASSY	1		
6	7CH-82510-00	MAIN SWITCH ASSY	1		
7	73A-82511-00	.KEY, MAIN SWITCH	2		
8	7RG-82517-00	WASHER, SPECIAL	1		
9	7WL-87213-01	COVER, CONTROL BOX	1		
10	97080-05016	BOLT	1		
11	95707-05500	NUT, FLANGE	1		
12	95380-05700	NUT	1		
13	97707-40516	SCREW, TAPPING	6		
14	7XX-82550-00	ENGINE STOP SWITCH ASSY	1		ECO. SW. (BLACK)
15	7LG-87239-00	RECEPTACLE COMP. (DC 24V-12A)	1		*2, NIPPON LOCK
	7H8-87214-11	RECEPTACLE COMP. (WCZ 1220-125)	1		AUS, PANASONIC
16	98507-04008	SCREW, PAN HEAD	2		
17	7WL-82181-00	CIRCUIT BREAKER COMP.	1		HOSIDEN (12A)
18	98507-03008	SCREW, PAN HEAD	2		
19	7CF-85680-00	SPEED LIMITER ASSY	1		
20	97707-30512	SCREW, TAPPING	1		



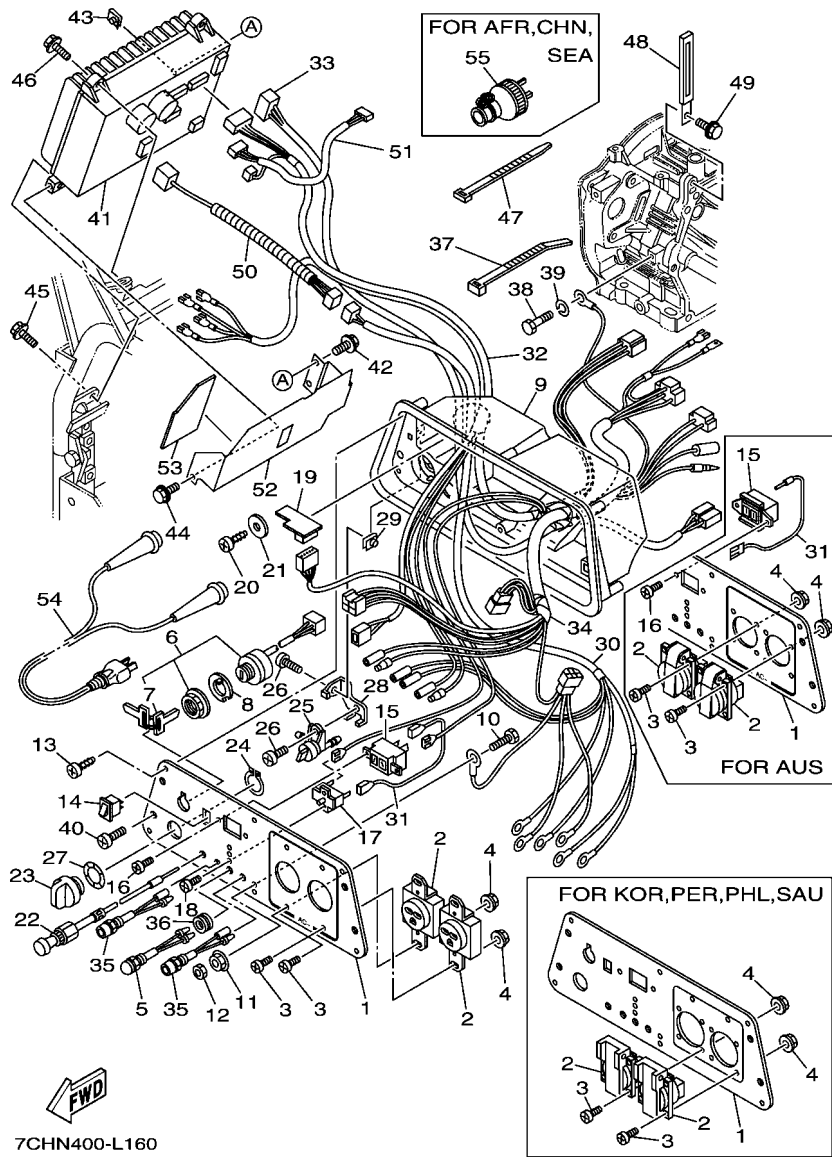


7CHN400-L160

\*1: FOR KOR, PER, PHL, SAU  
 \*2: EXCEPT FOR AUS

FIG. 16 CONTROL BOX

REF. NO.	PART NO.	DESCRIPTION	7CHN	REMARKS
21	90201-03013	WASHER, PLATE	1	
22	7TD-26331-00	CABLE, CHOKE	1	
23	7WL-24524-00	LEVER, COCK	1	
24	99009-24400	CIRCLIP	1	
25	7WL-24500-00	FUEL COCK ASSY 1	1	
26	98507-05012	SCREW, PAN HEAD	2	
27	90206-26001	WASHER, WAVE	1	
28	7WL-24544-00	BRACKET, FUEL COCK	1	
29	90183-05076	NUT, SPRING	1	
30	7CH-87225-20	WIRE, LEAD 3	1	AFR, CHN, SEA
	7CH-87225-N0	WIRE, LEAD 3	1	AUS
	7CH-87225-K0	WIRE, LEAD 3	1	KOR, PER, PHL, SAU
31	7WL-8722Y-00	WIRE, LEAD 4	1	EXCEPT FOR AUS
	7WL-8722Y-N0	WIRE, LEAD 4	1	AUS
32	7CH-8722J-10	WIRE, LEAD	1	EXCEPT FOR AUS
	7CH-8722J-N0	WIRE, LEAD	1	AUS
33	7CH-8722X-00	WIRE, LEAD 5	1	
34	7CH-8722W-20	WIRE, LEAD 6	1	AFR, CHN, SEA
	7CH-8722W-70	WIRE, LEAD 6	1	AUS, *1
35	7CH-83582-C1	PILOT LIGHT ASSY	2	
36	90480-13012	GROMMET	1	
37	7CH-87188-00	BINDER	1	
38	97007-06012	BOLT	1	
39	92907-06100	WASHER, SPRING	1	
40	98907-06014	SCREW, BIND	4	
41	7CH-8A210-B0	CONTROL UNIT	1	AUS, AFR, CHN, SEA
	7CH-8A210-K0	CONTROL UNIT	1	KOR, PER, PHL, SAU



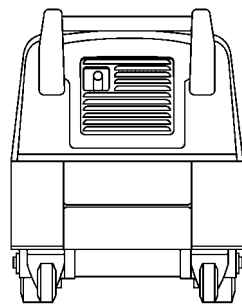
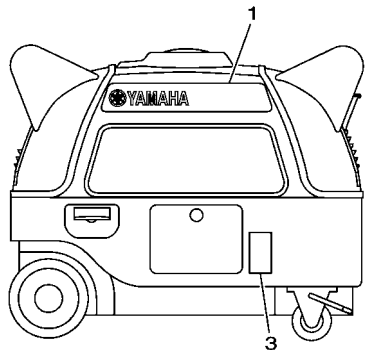
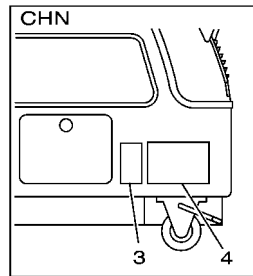
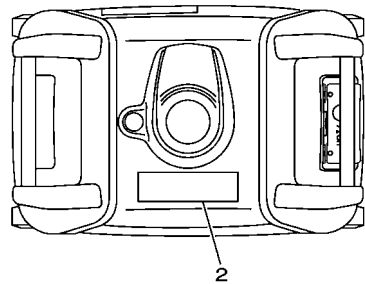
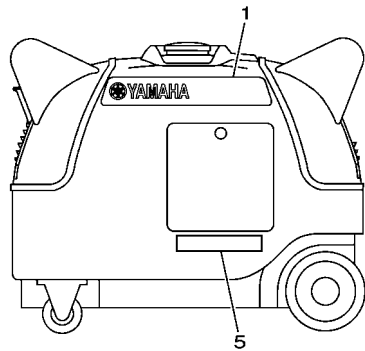
7CHN400-L160

\*1: FOR KOR, PER, PHL, SAU  
 \*2: EXCEPT FOR AUS

FIG. 16 CONTROL BOX

REF. NO.	PART NO.	DESCRIPTION	7CHN				REMARKS
42	98907-05010	SCREW, BIND	2				
43	90183-05076	NUT, SPRING	2				
44	95827-06012	BOLT, FLANGE	1				
45	95827-06012	BOLT, FLANGE	2				
46	95807-06020	BOLT, FLANGE	2				
47	90464-13073	CLAMP	1				
48	90462-05061	CLAMP	1				
49	95807-06012	BOLT, FLANGE	1				
50	7CH-8A530-10	WIRE COMPLETE	1				
51	7CH-82509-00	WIRE, SUB LEAD	1				
52	7CH-8A8C0-11	COVER	1				
53	7CH-84537-11	PLATE, INSULATOR	1				
54	7LG-87209-00	CHARGE CORD ASSY	1				EXCEPT FOR AUS
	7LJ-87209-10	CHARGE CORD ASSY	1				AUS
55	7G7-87236-00	PLUG, AC RECEPTACLE (15A-250V)	2				AFR, CHN, SEA

**FIG. 17 LABELS**



7CHN400-L170

REF. NO.	PART NO.	DESCRIPTION	7CHN					REMARKS
1	7WL-24161-10	EMBLEM 1 (YAMAHA)	2					
2	7CF-24162-40	EMBLEM 2 (WARNING)	1					
3	7WL-24164-51	EMBLEM 4 (OIL & SPECIFICATION)	1					AFR,CHN,SEA
	7WL-24164-41	EMBLEM 4 (OIL & SPECIFICATION)	1					AUS
	7CH-24164-A1	EMBLEM 4 (OIL & SPECIFICATION)	1					KOR,PER,PHL,SAU
4	7NJ-24162-N1	EMBLEM 2 (WARNING)	1					CHN
5	7CH-21696-31	LABEL, CAUTION (NOTICE ....)	1					EXCEPT FOR AUS
	7CH-21696-20	LABEL, CAUTION (SPECIFIED PLUG	1					AUS

NUMERICAL INDEX

PART NO.	REF. NO.	PART NO.	REF. NO.	PART NO.	REF. NO.	PART NO.	REF. NO.	PART NO.	REF. NO.	PART NO.	REF. NO.
7WL-12223-00	4 - 12	7WL-21764-00	10 - 30	7CH-2289V-00	10 - 17	3V6-82131-00	9 - 21	7CH-8A530-10	16 - 50	7CN-E5362-20	8 - 14
7CH-12684-00	4 - 9	4U5-2176E-00	10 - 10	7CH-228A0-00-P0	10 - 1	42X-82151-00	14 - 15	7CH-8A8C0-11	16 - 52	7CP-E5421-00	8 - 6
7WL-12685-00	4 - 10		10 - 22	7CH-228B0-00-P0	10 - 7	7WL-82181-00	16 - 17	7CN-E1111-11	1 - 1	7CN-E5451-01	8 - 12
7WL-12686-00	4 - 11	7WL-2281E-00	10 - 9	7CH-228C0-11-P0	10 - 12	7CH-82509-00	16 - 51	7CN-E1160-00	1 - 10	7CP-E5494-00	8 - 11
7WL-12690-00	7 - 18	7WL-2281F-00	10 - 21	7CH-228D0-00-P0	10 - 19	7CH-82510-00	16 - 6	7CN-E1169-01	1 - 12	7CP-E5710-02	4 - 17
7WL-12877-00	4 - 13	7WL-22840-01	9 - 1	7WL-228E0-00-P0	10 - 24	73A-82511-00	16 - 7	7CN-E1181-01	1 - 4	7CP-E5711-00	4 - 18
7LV-14118-00	6 - 25	7CH-22845-C0	9 - 17	7CH-228F0-11-P0	10 - 27	7RG-82517-00	16 - 8	7CN-E1191-00	1 - 9	7CN-E5713-00	4 - 21
22F-14139-00	6 - 26	7CH-22846-C1	9 - 18	7CH-228G0-00	11 - 1	7XX-82550-00	16 - 14	7CN-E1193-00	1 - 13	7CN-E5714-02	4 - 19
620-14142-37-A0	6 - 6	7WL-22850-00	9 - 2	7CH-228H0-00	11 - 11	7CH-83530-G0	16 - 5	7CN-E1400-90	2 - 1	7CN-E5715-00	4 - 22
7LG-14150-11	6 - 19	7WL-22857-00	11 - 36	7WL-228J0-00	11 - 20	7CH-83582-C1	16 - 35	7CN-E1610-00	2 - 5	7CN-E5716-01	4 - 23
7EG-14159-00	6 - 20	7CH-22873-00	10 - 2	7WL-228K0-00	11 - 26	7CH-84537-11	16 - 53	7CN-E1610-10	2 - 5	7CN-E5723-00	4 - 8
7TD-14162-00	6 - 15	7CH-22874-00	10 - 8	7WL-23363-00	11 - 2	7CH-85119-00	15 - 9	7CN-E1610-20	2 - 5	7CN-E5741-01	4 - 20
7TD-14181-00	6 - 13	7WL-22875-00	10 - 28		11 - 12	7CF-85680-00	16 - 19	7CN-E1631-10-A0	2 - 4	7CP-E5751-00	4 - 25
7G0-14184-00	6 - 12	7CH-22876-10	10 - 13		11 - 21	7A9-85710-03	12 - 5	7CN-E1633-00	2 - 6	7CN-E5793-00	4 - 24
7LG-14185-00	6 - 7	7CH-22877-00	10 - 20		11 - 27	7CH-85710-C0	12 - 5	7CN-E1635-00	2 - 4	7C2-F4612-00	12 - 3
22F-14186-00	6 - 10	7CH-22878-00	10 - 16	7CH-23781-C0	9 - 15		12 - 5	7CN-E1636-00	2 - 4		12 - 3
7E1-14191-00	6 - 18	7WL-22878-00	10 - 25	7WL-24110-01	12 - 1	7VU-86515-00	15 - 12	7CN-E1650-11	2 - 2	7CP-H1800-11	14 - 1
7WL-14197-00	6 - 27	7CH-22879-00	11 - 3	7WL-24110-02	12 - 1	7VU-87105-00	15 - 11	7CN-E1654-00	2 - 3	7CP-H1801-00	14 - 2
7NJ-14211-00	6 - 16	7WL-22885-00	11 - 4		12 - 1	7WL-87139-00	15 - 8	7CN-E2111-00	3 - 2	7CP-H1807-00	14 - 5
73A-14212-00	6 - 4		11 - 13	7CH-2414G-11	12 - 7	7WL-87150-21	15 - 1	7CN-E2117-00	3 - 6	7CP-H1828-00	14 - 4
	6 - 17	7CH-22886-00	11 - 5	7WL-24161-10	17 - 1	7WL-87160-01	15 - 2	7CN-E2118-00	3 - 7	7CP-H1833-00	14 - 8
7RH-14216-00	6 - 2		11 - 14	7CF-24162-40	17 - 2	7WL-87172-00	15 - 3	7DH-E2119-01	3 - 14	7CP-H1858-00	14 - 6
7G0-14227-00	6 - 14	7CH-22887-00	11 - 6	7NJ-24162-N1	17 - 4	7CH-87188-00	16 - 37	7CN-E2121-00	3 - 3	7CP-H1859-00	14 - 7
7X9-14239-00	6 - 11		11 - 15	7WL-24164-41	17 - 3	7WL-8719F-00	15 - 7	7CN-E2151-00	3 - 8	7CN-H2370-00	13 - 9
1HX-1423E-40-A0	6 - 9	7WL-22888-00	11 - 22	7WL-24164-51	17 - 3	7LG-87209-00	16 - 54	7CN-E2153-00	3 - 4	7CP-H2372-00	13 - 10
7VU-14293-00	5 - 8		11 - 28	7CH-24164-A1	17 - 3	7LJ-87209-10	16 - 54	7CN-E2154-00	3 - 13	7CP-H2373-00	13 - 11
7WL-14430-00	7 - 19	7CH-22889-00	11 - 7	630-24167-00	12 - 4	7WL-87213-01	16 - 9	7CN-E2155-01	3 - 12	7CP-H5521-00	13 - 3
7RH-14486-00	6 - 3	7LG-22891-00	9 - 5	7WL-24311-01	12 - 8	7H8-87214-11	16 - 15	7CN-E2157-01	3 - 10	7CF-H5640-00	13 - 2
JAG-14613-00	7 - 8	7CH-22896-00	10 - 29	7WL-24312-00	12 - 14	7G7-87221-01	16 - 2	7CN-E2158-01	3 - 11	7CN-H5650-40	13 - 1
7WL-14627-00	7 - 9	7WL-22896-00	11 - 23	4SV-24453-00	6 - 21	7H7-87221-81	16 - 2	7CN-E2165-00	3 - 9	7CN-H5720-00	13 - 12
7CH-14637-00	7 - 10		11 - 29	7WL-24500-00	16 - 25	7CK-87221-90	16 - 2	7CN-E2170-00	3 - 1	7CN-H5724-00	13 - 14
7CH-14711-00	7 - 1	7CH-22897-00	10 - 3	5BM-24514-00	12 - 13	7CH-87225-20	16 - 30	7CN-E2610-10	4 - 1	90116-06807	1 - 3
7WL-14786-00	7 - 2	7WL-22899-00	11 - 16	7WL-24524-00	16 - 23	7CH-87225-K0	16 - 30	7CP-E2616-00	4 - 16	90149-06194	10 - 11
7NJ-14788-00	7 - 4	7WL-2289A-00	11 - 24	7WL-24544-00	16 - 28	7CH-87225-N0	16 - 30	7CN-E2651-01	4 - 3		10 - 23
7WL-14799-00	7 - 3		11 - 30	74T-24610-00	12 - 2	7CH-8722J-10	16 - 32	7CP-E2658-00	4 - 4	90151-03032	16 - 3
7NJ-1479E-00	7 - 5	7WL-2289F-00	11 - 8	7VU-24610-C0	12 - 2	7CH-8722J-N0	16 - 32	7CP-E2659-00	4 - 5	90153-05024	7 - 6
1WG-14922-00	6 - 5		11 - 17		12 - 2	7CH-8722W-20	16 - 34	7CN-E3557-01	5 - 2	90170-14403	15 - 15
14X-14937-00	6 - 28	7WL-2289G-00	11 - 9	796-24612-00	12 - 3	7CH-8722W-70	16 - 34	7CN-E3567-01	5 - 3	90170-14800	13 - 6
7NN-1495F-1B	6 - 8		11 - 18	7TD-26331-00	16 - 22	7CH-8722X-00	16 - 33	7CN-E3596-00	5 - 1	90179-03478	16 - 4
7TD-15755-00	4 - 14	7WL-2289H-00	11 - 31	7TA-28100-00	9 - 23	7WL-8722Y-00	16 - 31	7CP-E4101-00	6 - 1	90183-05076	16 - 29
7WL-21541-00	9 - 9	7WL-2289J-00	11 - 32	7CF-81802-09	6 - 22	7WL-8722Y-N0	16 - 31	7CP-E4196-00	6 - 29		16 - 43
7WL-21542-00	9 - 11	7WL-2289K-00	11 - 33	7WL-81815-00	14 - 18	7G7-87236-00	16 - 55	7CP-E4411-00	5 - 4	90201-03013	16 - 21
7WL-21556-00	9 - 13	7WL-2289L-00	9 - 4	3EL-81940-02	14 - 14	7LG-87239-00	16 - 15	7CP-E4451-00	5 - 6	90206-26001	16 - 27
7WL-21556-10	9 - 14	7WL-2289M-00	11 - 34	353-81970-M0	13 - 15	7CH-87249-A0	16 - 1	7CP-E4453-00	5 - 10	90269-10002	9 - 12
7WL-21600-00	9 - 8	7CH-2289N-00	10 - 4	3VD-82100-01	14 - 13	7CH-87249-G0	16 - 1	7CP-E4461-00	5 - 7	90280-04801	13 - 8
7WL-21600-10	9 - 10	7CH-2289R-00	10 - 5	7WL-82115-00	14 - 16	7CH-87249-N0	16 - 1	7CP-E4472-00	5 - 5	90338-28239	9 - 7
7CH-21696-20	17 - 5	7CH-2289T-00	10 - 14	7WL-82116-00	14 - 17	7CH-8A210-B0	16 - 41	7CN-E5111-50	8 - 1	90430-10801	8 - 8
7CH-21696-31	17 - 5	7CH-2289U-00	10 - 15	7WL-82122-00	9 - 20	7CH-8A210-K0	16 - 41	7CP-E5315-00	8 - 2	90445-13800	1 - 11

NUMERICAL INDEX

PART NO.	REF. NO.	PART NO.	REF. NO.	PART NO.	REF. NO.	PART NO.	REF. NO.	PART NO.	REF. NO.	PART NO.	REF. NO.
90462-05061	4 - 7	95807-06014	11 - 10								
	14 - 12		11 - 19								
	16 - 48		11 - 25								
90464-13073	16 - 47		11 - 35								
90467-08002	12 - 9	95807-06016	15 - 4								
90467-09103	12 - 10	95807-06020	4 - 15								
90467-10008	12 - 11		16 - 46								
90467-11106	12 - 12	95807-06030	7 - 14								
90480-13012	16 - 36	95807-08012	7 - 12								
90501-20800	3 - 5	95807-08016	7 - 13								
91401-30040	9 - 16		9 - 19								
92902-05100	6 - 24	95822-06012	1 - 14								
92902-14200	13 - 7		4 - 6								
92907-05100	14 - 11		13 - 13								
92907-06100	7 - 16	95822-06020	13 - 4								
	16 - 39		14 - 9								
92907-06600	7 - 17	95822-06025	13 - 5								
	13 - 17	95822-08035	8 - 13								
	14 - 20	95822-08045	1 - 6								
92907-14200	15 - 16	95822-08065	1 - 5								
93102-25806	8 - 4	95827-06012	10 - 32								
	8 - 10		16 - 44								
93210-22805	8 - 15		16 - 45								
93210-55669	14 - 3	95827-06055	15 - 5								
93306-205XE	8 - 3	95880-06012	10 - 31								
	8 - 9	97007-06010	14 - 19								
93450-17828	2 - 7	97007-06012	16 - 38								
94702-00331	1 - 8	97007-06045	7 - 15								
95022-10016	8 - 7	97080-05016	16 - 10								
95307-06600	7 - 7	97707-30512	16 - 20								
95380-05700	16 - 12	97707-40516	16 - 13								
95602-06615	1 - 2	98502-05008	6 - 23								
95607-05200	15 - 14	98502-08012	8 - 16								
95702-06500	5 - 9	98507-03008	16 - 18								
95707-04500	16 - 4	98507-04008	16 - 16								
95707-05500	16 - 11	98507-04012	16 - 3								
95707-08500	9 - 6	98507-05008	14 - 10								
95780-06500	15 - 10	98507-05012	16 - 26								
95802-06012	4 - 2	98507-05020	15 - 13								
95807-06010	10 - 26	98507-06020	13 - 16								
95807-06012	7 - 11	98907-05010	16 - 42								
	7 - 20	98907-06014	16 - 40								
	9 - 3	99009-24400	16 - 24								
	9 - 22	99530-08012	15 - 6								
	10 - 6	99530-08016	8 - 5								
	10 - 18	99530-10114	1 - 7								
	12 - 6										
	16 - 49										